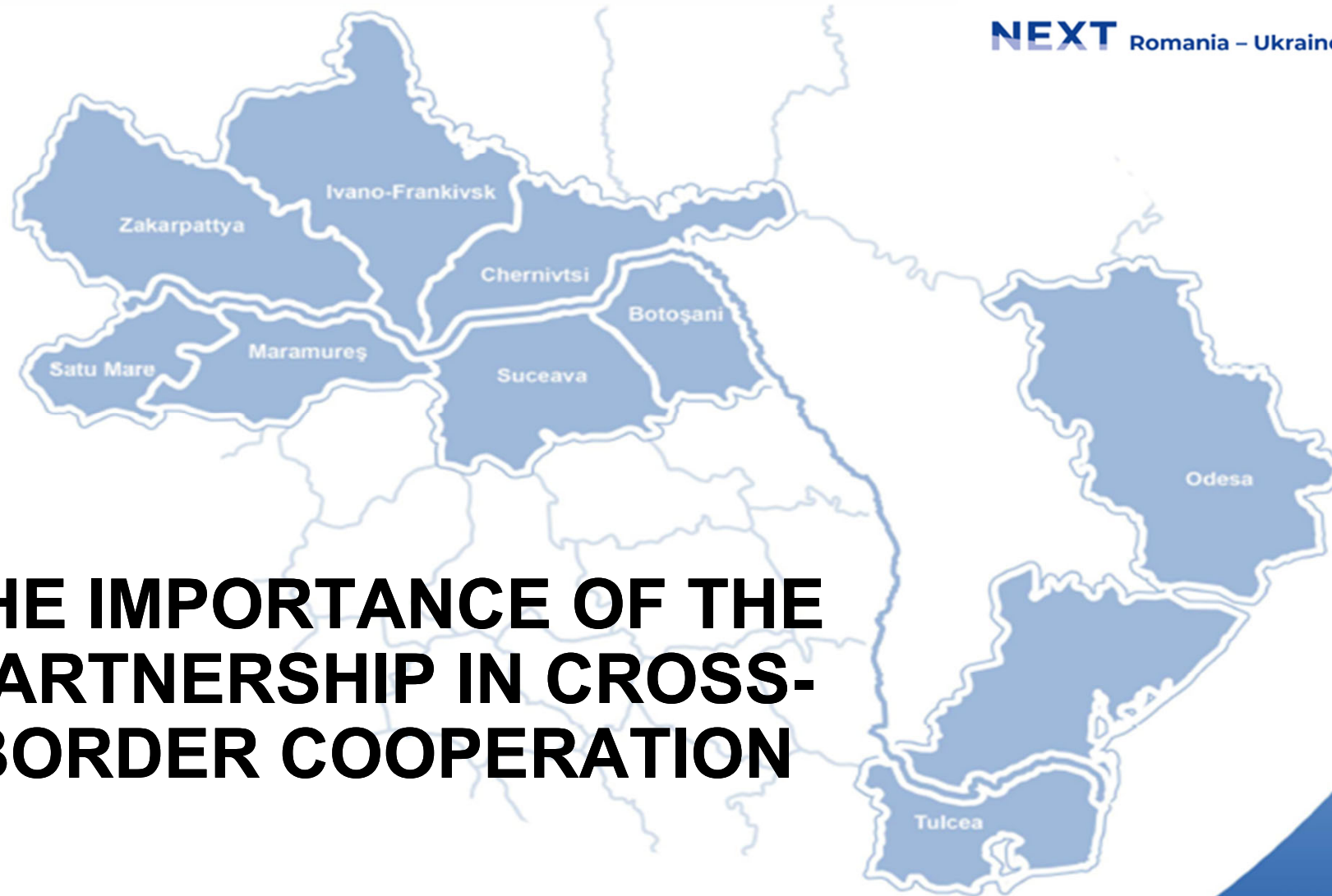


Interreg



Co-funded by
the European Union

NEXT Romania – Ukraine



THE IMPORTANCE OF THE PARTNERSHIP IN CROSS- BORDER COOPERATION

Partnership building



❖ A new partner/ A new partnership

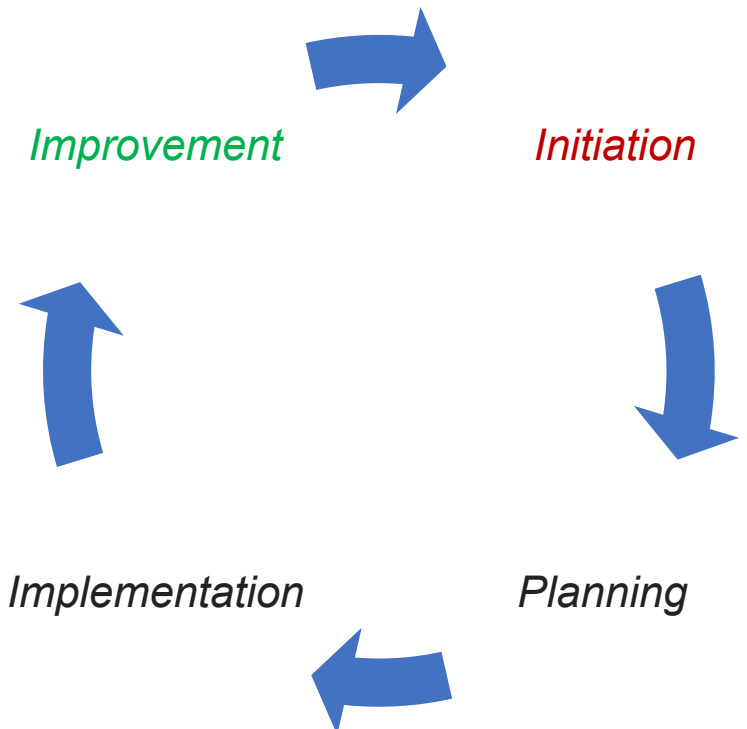
Initiating cooperation/ pilot projects

Developing new initiatives

❖ Existing partner / partnership

Strengthening previous relationships/strategic approach

Capitalising on previous experiences



Why is the partnership necessary?



Mandatory programme requirement:

- ❖ At least one partner registered in Romania
- ❖ At least one partner registered in Ukraine

***Partnership should be seen as an opportunity,
not just a requirement!***



Cross-border partnerships – opportunities and added value




A way to:

- Jointly address cross-border challenges (e.g. pollution, epidemics)
- Jointly explore the development potential of the border area (e.g. tourism, labour mobility, education)
- Exchange experience and best practices on issues of common interest (e.g. regional development, learning, networking, new perspectives in the context of Ukraine's EU integration preparations)



Cross-border partnerships and Programme results

- 
1. Direct partners managing the project min.2 - max.4
 2. Other entities may contribute :
 - If mentioned in the application and demonstrated during implementation;
 - If there will be a continuation of initiatives after project completion (1 year, signature of partnership/ collaboration agreement).

Partnership from the perspective of the evaluation process



- Separate assessment criterion: relevance/quality of the partnership
- And other assessment criteria with specific references, namely:
 - cross-border impact (clear benefit from cooperation between partners for: both partners, selected target group, programme area);
 - operational and financial capacity (clarity in the division of tasks and according to the role and scope of each partner, etc.)

Mandatory cooperation criteria: joint project development, joint implementation, joint funding

Optional cooperation criteria: joint staffing

Useful tips



Identify the need and initiate the project idea



Define the type of institution needed to implement the project



Consult traditional partners, Programme structures, umbrella organisations, other stakeholders

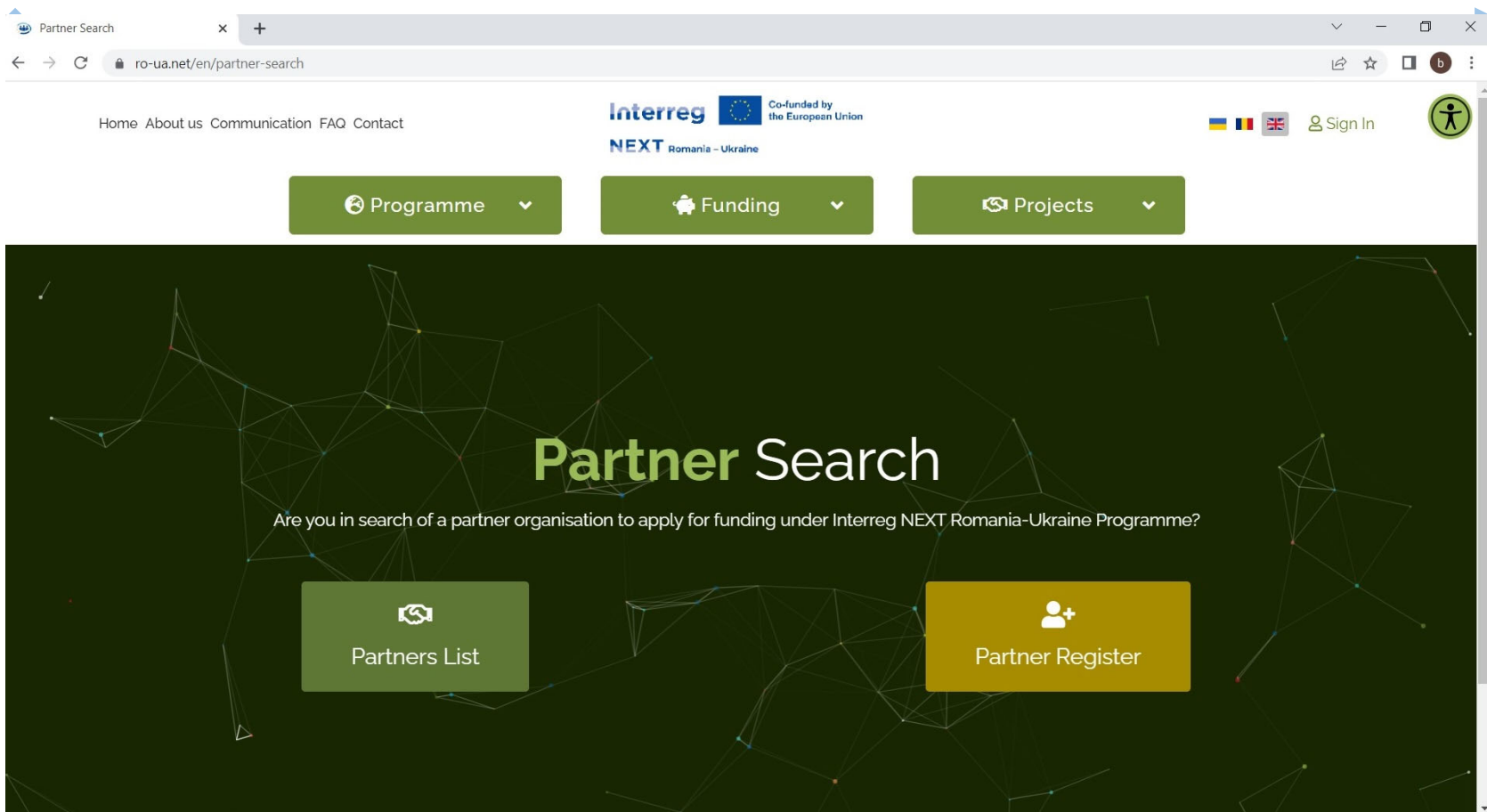


Research on your own



Keep in touch, promote and jointly develop the project idea

Identify partners - TOOLS(1/2)



The screenshot shows a web browser window with the URL `ro-ua.net/en/partner-search`. The page header includes the Interreg logo, the European Union flag, and the text "Co-funded by the European Union". Below this, the "NEXT Romania – Ukraine" logo is displayed. The navigation menu includes links for "Home", "About us", "Communication", "FAQ", and "Contact". On the right side of the header, there are flags for Romania and Ukraine, a "Sign In" button, and a user profile icon.

The main content area features three green buttons with white icons and text: "Programme" (with a globe icon), "Funding" (with a wallet icon), and "Projects" (with a camera icon). Below these buttons is a large dark green banner with a network diagram background. The banner contains the text "Partner Search" in large white font, followed by the question "Are you in search of a partner organisation to apply for funding under Interreg NEXT Romania-Ukraine Programme?". At the bottom of the banner are two buttons: a green "Partners List" button with a magnifying glass icon, and a yellow "Partner Register" button with a person icon.

Identify partners - TOOLS(2/2)



- ☐ **Information on projects selected under the programme**

ENI CBC 2014-2020 – partners in implemented projects

<https://ro-ua.net/en/about-the-programme/awarded-projects>

(also data from other CBC Programmes including Romania and Ukraine)

- ☐ **Shared database** <https://keep.eu/partners/> with various information on cross-border projects, including ENPI and ENI

Role of the partners



Project leader/Lead partner

- ☐ Is the representative of the partnership in relation to the programme structures;
- ☐ Has a number of responsibilities (e.g. uploading the project proposal and documents into JeMS, signing the grant contract, submitting technical and financial reports, requesting/receiving payment instalments, recovering amounts unduly paid);
- ☐ Legal and financial responsibility for the implementation of activities and for the use of European funding allocated at project level;
- ☐ Informs the MA/JS of any situation that may jeopardise the proper implementation of the project.

The project partner

- ☐ Actively cooperates in the development and implementation of the project;
- ☐ Contributes to the allocation of financial resources;
- ☐ Provides the project leader information and documents (evaluation, reporting, etc.)
- ☐ Ensures it can make and receive international transfers through bank accounts.

I have a partner. Is there a need for anyone else in the partnership?



- Are there other actors in the project's area of interest? Should they be involved?
- Who can best promote the project idea to attract key decision-makers? Have we considered this?
- Do the partnership members succeed in getting the desired message across to the general public? Do we need support?
- Is the target group targeted by the project an NGO/ Cluster/ Employer? Should they be involved?
- Do the concerned partners have the necessary skills to successfully implement the project? Should another partner be involved?

LONG-TERM IMPACT

Think outside the box!



- Facilitating crisis support
- Cross-border information exchange
- Consultation between cross-border partners
- Conflict avoidance
- Formulation of common priorities
- Possibility for partners to set up and finance a joint coordination body (Euroregions, EGTC, etc.)
- Possibility for partners to finance future cross-border services

Key messages



Be active: consult different sources to search for partners within and outside the Programme

Be pro-active: who else should be involved in the project for it to succeed?

Analyse carefully: verify the experience, expertise and capacity of potential partners

Share fairly: allocate clear tasks and responsibilities to all partners based on their experience and capabilities

Hurry, but do it slowly: analysis, brainstorming, sharing of experience and learning are needed to contribute to the success of the project

Interreg



Co-funded by
the European Union

NEXT Romania – Ukraine

For news and information visit regularly programme website:

www.ro-ua.net

Interreg



Co-funded by
the European Union

NEXT Romania – Ukraine

Joint Secretariat of the programme
Interreg NEXT Romania - Ukraine

Regional Office for Crossborder Cooperation from Suceava for the
Romania-Ukraine Programme, Romania

info.ro-ua@brctsuceava.ro